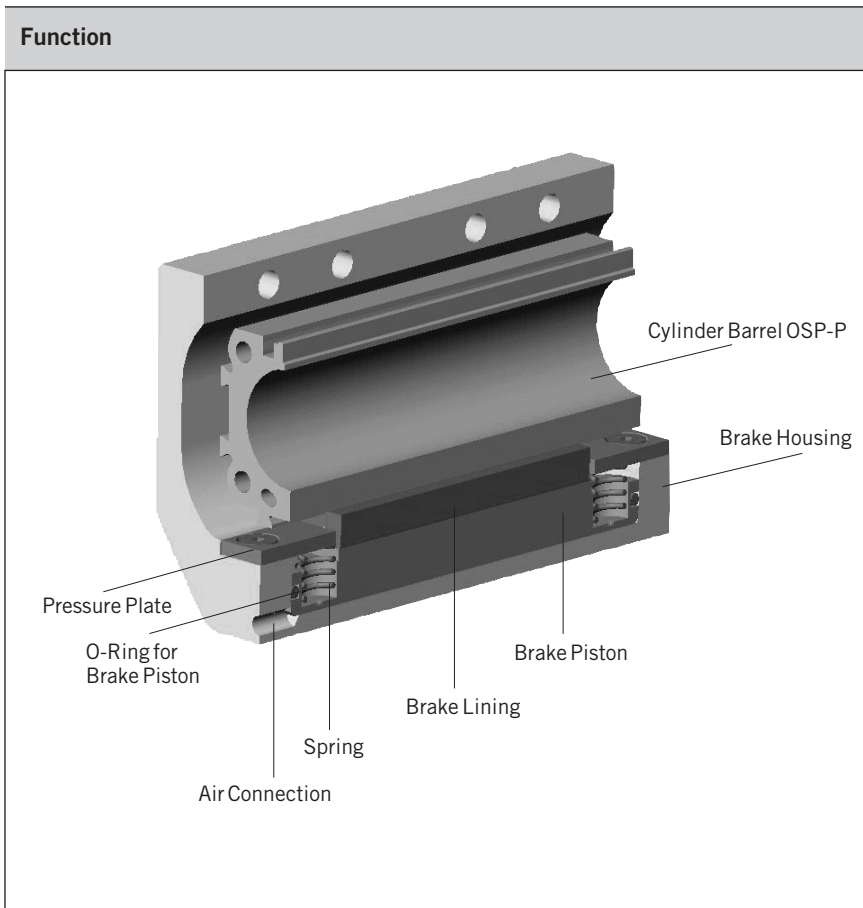


A1P616E00HAA00X

The right to introduce technical modifications is reserved



Forces and Weights

Series	For linear drive	Max. braking force [N] ⁽¹⁾	Brake pad way [mm]	Mass [kg]			Order No. Active brake
				Linear drive with brake 0 mm stroke	increase per 100mm stroke	brake*	
AB 25	OSP-P25	350	2.5	1.0	0.197	0.35	20806
AB 32	OSP-P32	590	2.5	2.02	0.354	0.58	20807
AB 40	OSP-P40	900	2.5	2.83	0.415	0.88	20808
AB 50	OSP-P50	1400	2.5	5.03	0.566	1.50	20809
AB 63	OSP-P63	2170	3.0	9.45	0.925	3.04	20810
AB 80	OSP-P80	4000	3.0	18.28	1.262	5.82	20811

⁽¹⁾ – at 6 bar
 both chambers pressurised with 6 bar
 Braking surface dry
 – oil on the braking surface will reduce the braking force

*** Please Note:**
 The mass of the brake has to be added to the total moving mass when using the cushioning diagram.

Active Brake



Series AB 25 to 80 for linear drive
 • Series OSP-P

Features:

- Actuated by pressurisation
- Released by spring actuation
- Completely stainless version
- Holds position, even under changing load conditions

For further technical data, please refer to the data sheets for linear drives OSP-P (1.10.002E)

Note:

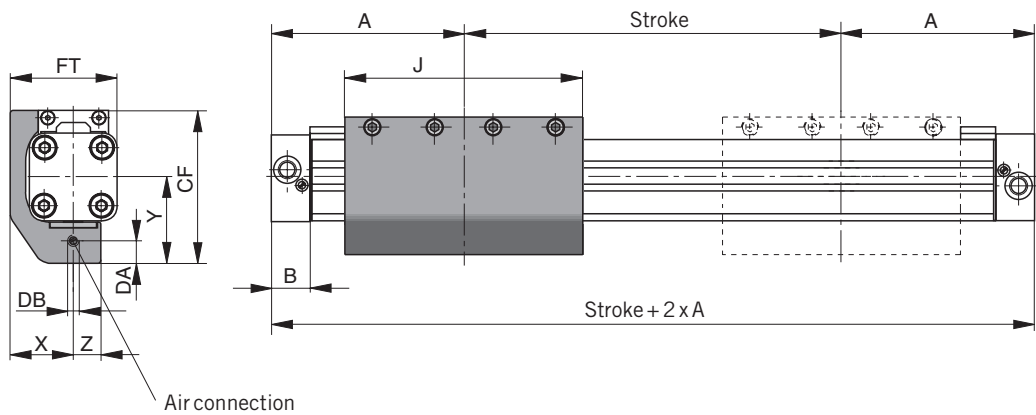
For combinations Active Brake AB + SFI-plus + Magnetic Switch contact our technical department please.



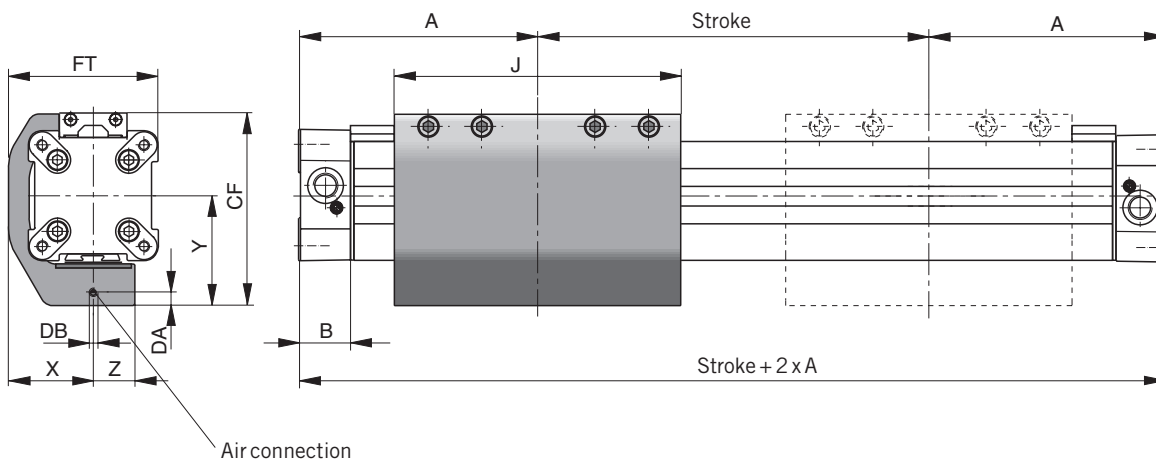
For additional information on loads, forces and moment, please refer to data sheet no. 1.10.002E



Series OSP-P25 and P32 with Active Brake AB



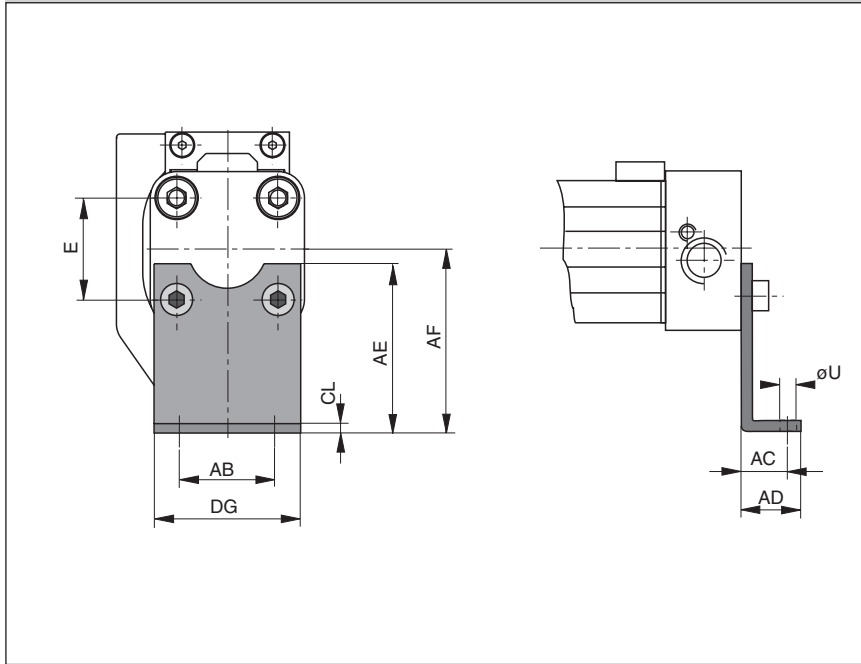
Series OSP-P40, P50, P63, P80 with Active Brake AB



Dimension Table (mm)

Series	A	B	J	X	Y	Z	CF	DA	DB	FT
AB 25	100	22	117	29.5	43	13	74	4	M5	50
AB 32	125	25.5	151.4	36	50	15	88	4	M5	62
AB 40	150	28	151.4	45	58	22	102	7	M5	79.5
AB 50	175	33	200	54	69.5	23	118.5	7.5	M5	97.5
AB 63	215	38	256	67	88	28	151	9	G1/8	120
AB 80	260	47	348	83	105	32	185	10	G1/8	149

Series OSP – P25 and P32 with Active Brake AB: Type A3



End Cap Mountings

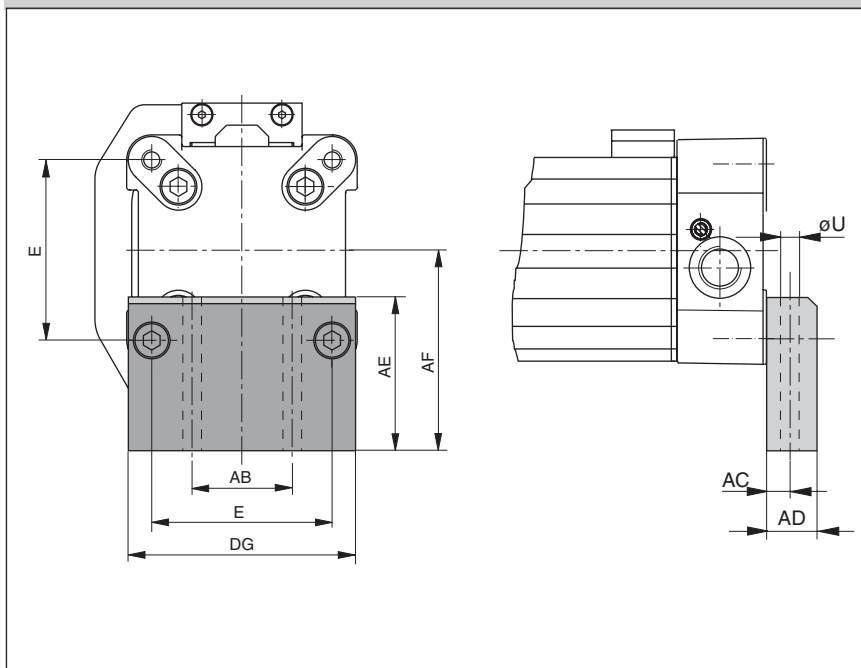
On the end-face of each cylinder end cap there are four threaded holes for mounting the cylinder. The hole layout is square, so that the mounting can be fitted to the bottom, top or either side.

Material: Series OSP-P25, P32:
Galvanised steel

The mountings are supplied in pairs.



Series OSP – P40, P50, P63, P80 with Active Brake AB: Type C3



Material: Series OSP-P40, P50,
P63, P80:
Anodised aluminium

The mountings are supplied in pairs.

Stainless steel version on request.



Dimension Table (mm)

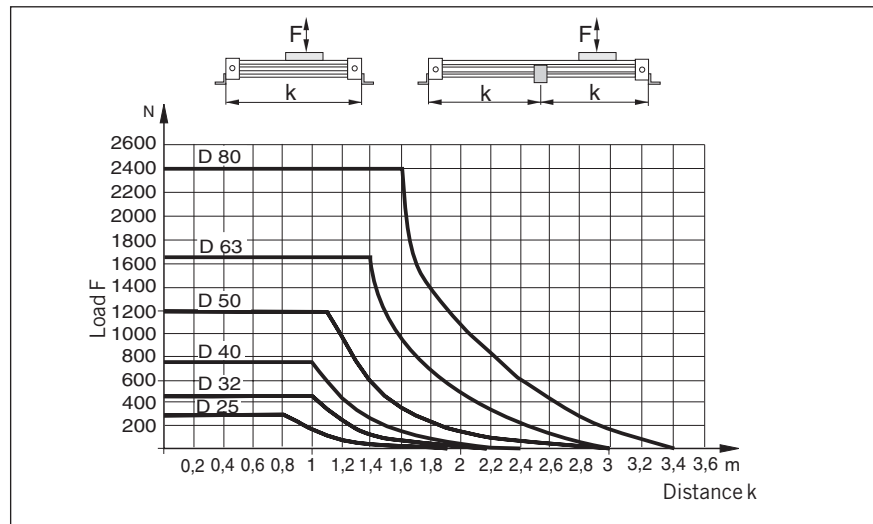
Series	E	øU	AB	AC	AD	AE	AF	CL	DG	Order No.	
										Type A3	Type C3
AB 25	27	5.8	27	16	22	45	49	2.5	39	2060	–
AB 32	36	6.6	36	18	26	42	52	3	50	3060	–
AB 40	54	9	30	12.5	24	46	60	–	68	–	20339
AB 50	70	9	40	12.5	24	54	72	–	86	–	20350
AB 63	78	11	48	15	30	76	93	–	104	–	20821
AB 80	96	14	60	17.5	35	88	110	–	130	–	20822

Mid Section Support

Mid-section supports are required from a certain stroke length to prevent excessive deflection and vibration of the linear drive.

The diagrams show the maximum permissible unsupported length in relation to loading. Deflection of 0.5 mm max. between supports is permissible.

The mid section supports are attached to the dovetail rails, and can take axial loads.



Mid Section Supports

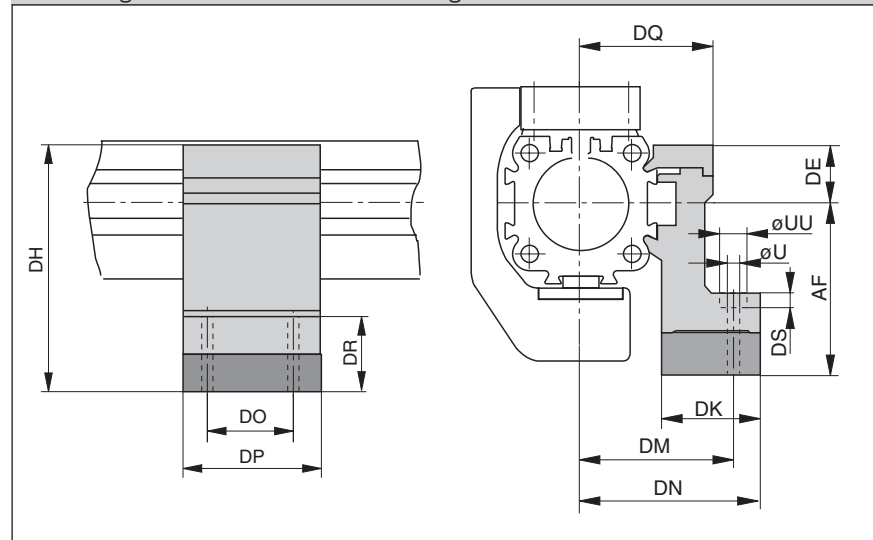
Note to Type E3:

Mid section supports can only be mounted opposite of the brake housing.

Stainless steel version available on request.



Series OSP-P25 to P80 with Active Brake AB: Type E3 (Mounting from above / below with through-bolt)



Dimension Table (mm)

Series	U	UU	AF	DE	DH	DK	DM	DN	DO	DP	DQ	DR	DS	Order No. Type E3
AB 25	5.5	10	49	16	65	26	40	47.5	36	50	34.5	35	5.7	20353
AB 32	5.5	10	52	16	68	27	46	54.5	36	50	40.5	32	5.7	20356
AB 40	7	-	60	23	83	34	53	60	45	60	45	32	-	20359
AB 50	7	-	72	23	95	34	59	67	45	60	52	31	-	20362
AB 63	9	-	93	34	127	44	73	83	45	65	63	48	-	20453
AB 80	11	-	110	39.5	149.5	63	97	112	55	80	81	53	-	20819

Accessories for linear drives with Active Brakes – please order separately

Description	For details information, see data sheet no.
Clevis mounting	1.45.002E
Adaptor profile	1.45.007E
T-groove profile	1.45.008E
Connection profile	1.45.009E
Magnetic switch (can only be mounted opposite of the brake housing)	1.45.100E, 1.45.104E
Incremental displacement measuring system SFI-plus	1.50.002E